

FEATURES

- Remote control with Zennio Remote
- Compatibility with ZenVoice through license
- Supports KNX Data Secure
- External 24-29 VDC power supply
- Ethernet connection RJ45 10/100Mbps Base T
- 10 logic functions
- Total data saving on KNX bus failure
- Integrated KNX BCU (TP1-256)
- Dimensions 67 x 90 x 36 mm (2 DIN units)
- DIN rail mounting according to IEC 60715 TH35, with fixing clamp
- Conformity with the CE, RCM directives (marks on the right side)

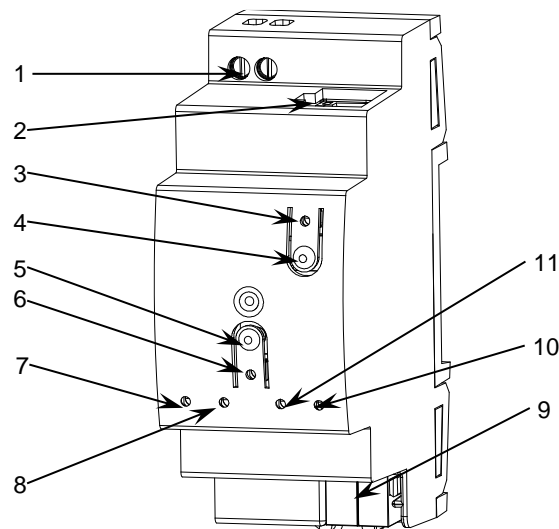


Figure 1: RemoteBOX

1. External Power Supply	2. Ethernet connector	3. Multifunction reset LED	4. Multifunction reset button
5. Programming button	6. Programming LED	7. Synchronization LED	8. IP connection LED
9. KNX connector	10. Without use	11. Server connection status LED	

Programming button: short press to set programming mode. If this button is held while plugging the device into the KNX bus, it enters the safe mode. In order to perform a KNX Secure factory reset, while the device is in safe mode, press the button for 10 seconds until the programming LED changes its state.
Multifunction Reset button: short press to perform a webtools password reset (associated LED flash yellow).

Programming LED: programming mode indicator (red). When the device enters the safe mode, it blinks (red) every half second. During the start-up (reset or after KNX bus failure) and if the device is not in safe mode, it emits a red flash.

Synchronization LED: shows that the device is unloaded or desynchronized (red); synchronizing (yellow flashing); synchronized (green).

IP connection LED: shows that the device is connected to Ethernet and has an IP address assigned (green) or is not connected/hasn't an IP address assigned (red).

Server connection status LED: shows a correct connection with the server (green); connection with failures (yellow); without connection (red).

GENERAL SPECIFICATIONS

CONCEPT			DESCRIPTION	
Type of device			Electric operation control device	
KNX supply	Voltage (typical)		29 VDC SELV	
	Voltage range		21-31 VDC	
	Maximum consumption	Voltage	mA	mW
		29 VDC (typical)	4.0	116.0
		24 VDC ¹	10	240
Connection type		Typical TP1 bus connector for 0.8 mm Ø rigid cable		
External power supply			24-29 VDC. Maximum consumption: 42 mA (24 VDC) - 35 mA (29 VDC)	
Operation temperature			0 .. +55 °C	
Storage temperature			-20 .. +55 °C	
Operation humidity			5 .. 95%	
Storage humidity			5 .. 95%	
Complementary characteristics			Class B	
Protection class			III	
Operation type			Continuous operation	
Device action type			Type 1	
Electrical stress period			Long	
Degree of protection			IP20, clean environment	
Installation			Independent device to be mounted inside electrical panels with DIN rail (IEC 60715)	
Minimum clearances			Not required	
Response on KNX bus failure			Data saving according to parameterization	
Response on KNX bus restart			Data recovery according to parameterization	
Operation indicator			The programming LED indicates programming mode (red). The synchronization LED shows that the device is unloaded or desynchronizated (red); synchronizing (yellow flashing); synchronized (green). The IP connection LED shows that the device is connected to Ethernet and has an IP address assigned (green) or not (red). The server connection status LED shows a correct connection with the server (green); connection with fails (yellow) or without connection (red). In case of firmware update, along the process all the LEDs will blink in red with the exception of the programming LED.	
Weight			91 g	
Housing material			PC FR V0 halogen free / 75 °C (housing) - 125 °C (connectors)	

¹ Maximum consumption in the worst-case scenario (KNX Fan-In model).

EXTERNAL POWER SUPPLY AND CONNECTIONS	
CONCEPT	DESCRIPTION
Voltage	24-29 VDC
Current	42 mA (24 VDC) - 35 mA (29 VDC)
Connection method	Screw terminal block (0.5 Nm max.)
Cable cross-section	0.5-2.5 mm² (IEC) / 26-12 AWG (UL)

PAIRING INSTRUCTIONS

- Pairing from Zennio Remote: The device is selected in the Zennio Remote APP and the pairing password (from the sticker or a customized one if parameterized) is entered.
- From Webserver tools: Access the remote control tab, click on "New pairing" and the pairing code with a QR will appear.
- Pairing through object: A 1-bit object is sent to generate a request for a pairing code and a text string is received with the code or an error message if pairing is not possible.

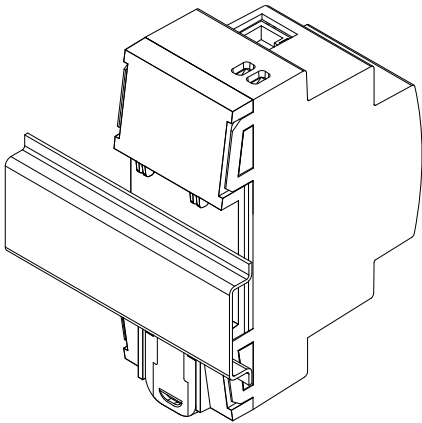
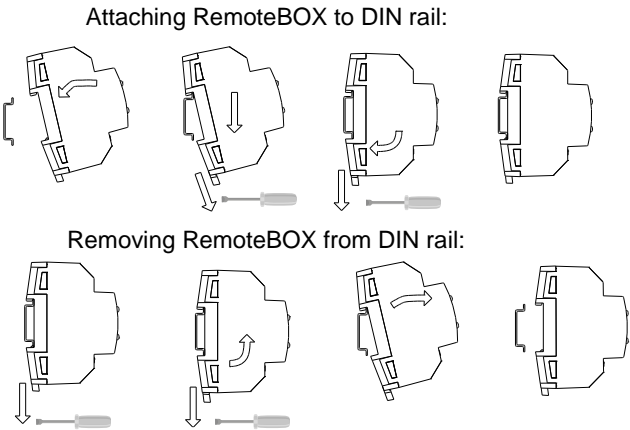



Figure 2: Mounting RemoteBOX on DIN rail

 SAFETY INSTRUCTIONS AND ADDITIONAL NOTES

- Installation should only be performed by qualified professionals according to the laws and regulations applicable in each country.
- Do not connect the mains voltage nor any other external voltage to any point of the KNX bus; it would represent a risk for the entire KNX system. The facility must have enough insulation between the mains (or auxiliary) voltage and the KNX bus or the wires of other accessories, in case of being installed.
-  • Keep the device away from water (condensation over the device included) and do not cover it with clothes, paper or any other material while in use.
- The WEEE logo means that this device contains electronic parts and it must be properly disposed of by following the instructions at <https://www.zennio.com/en/legal/weee-regulation>.
- This device contains software subject to specific licences. For details, please refer to <https://zennio.com/licenses>.